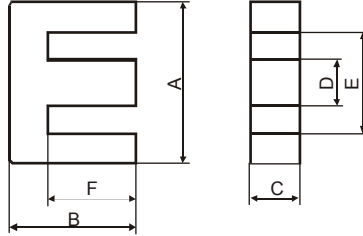
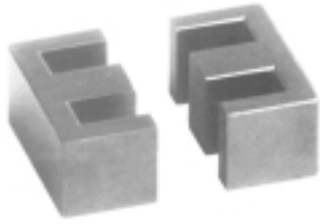


TYPE	Dimensions(mm)						
	A	B	C	D	E min	F	I
EI12.5	12.5 ± 0.3	7.4 ± 0.2	5.0 ± 0.2	2.4 ± 0.2	9.1	5.1 ± 0.2	1.5 ± 0.15
EI16	16.0 ± 0.4	12.4 ± 0.3	4.8 ± 0.2	4.0 ± 0.2	11.7	10.4 ± 0.3	2.0 ± 0.2
EI19	19.2 ± 0.4	13.6 ± 0.4	5.1 ⁺⁰ _{-0.5}	5.1 ⁺⁰ _{-0.5}	14.0	11.0 ^{+0.6} ₋₀	2.4 ± 0.2
EI22A	22.0 ± 0.6	15.0 ± 0.3	6.0 ⁺⁰ _{-0.5}	6.0 ⁺⁰ _{-0.5}	15.6	11.0 ± 0.3	4.0 ± 0.3
EI25A	25.4 ± 0.5	16.3 ^{+0.5} _{-0.1}	6.8 ⁺⁰ _{-0.5}	6.6 ± 0.3	18.6	13.0 ^{+0.5} _{-0.1}	3.0 ± 0.2
EI28A	28.0 ± 0.6	17.5 ^{+0.3} _{-0.2}	11.0 ⁺⁰ _{-0.5}	7.5 ⁺⁰ _{-0.6}	18.6	12.8 ^{+0.3} _{-0.2}	3.5 ± 0.3
EI28B	28.0 ± 0.6	16.75 ± 0.25	11.0 ⁺⁰ _{-0.6}	7.25 ± 0.25	18.6	12.25 ± 0.25	3.5 ± 0.3
EI30	30.5 ± 0.5	21.5 ^{+0.6} _{-0.2}	11.0 ⁺⁰ _{-0.5}	11.0 ⁺⁰ _{-0.5}	20.0	16.5 ± 0.3	5.5 ± 0.3
EI33	33.0 ± 0.6	24.0 ^{+0.5} ₋₀	13.0 ⁺⁰ _{-0.5}	9.7 ± 0.3	23.8	19.0 ^{+0.5} ₋₀	5.0 ± 0.3
EI35A	35.0 ± 0.6	24.2 ± 0.5	10.0 ± 0.3	10.0 ± 0.3	24.5	18.2 ± 0.3	5.0 ± 0.3
EI35B	35.0 ± 0.6	24.2 ± 0.5	11.7 ± 0.3	10.0 ± 0.3	24.5	18.2 ± 0.3	5.0 ± 0.3
EI40A	40.0 ± 0.7	27.3 ± 0.3	12.0 ⁺⁰ _{-0.5}	12.0 ⁺⁰ _{-0.5}	26.8	21.0 ^{+0.7} ₋₀	6.7 ± 0.3
EI40B	40.0 ± 0.7	27.2 ^{+0.6} ₋₀	12.0 ⁺⁰ _{-0.5}	12.0 ⁺⁰ _{-0.5}	27.5	20.2 ^{+0.6} ₋₀	7.5 ± 0.3
EI50	50.0 ± 0.7	33.35 ± 0.35	14.6 ± 0.4	14.6 ± 0.4	34.0	24.75 ± 0.3	9.0 ± 0.3
EI60	60.0 ± 0.8	35.85 ± 0.35	15.6 ± 0.4	15.6 ± 0.4	44.1	27.85 ± 0.35	8.5 ± 0.3

TYPE	C ₁ (mm ⁻¹)	A _e (mm ²)	L _e (mm)	V _e (mm ²)	AL(nH/N ²)+25%			Weight (g)
					TK	TP3	TP4	
EI2.5	1.44	14.4	20.6	297.5	1300	1200	1200	1.9
EI16	1.84	19.7	34.9	685.3	1400	1000	1000	3.3
EI19	1.5	24	39.0	1028.2	1500	1200	1200	5.0
EI22A	1.1	40.1	42.3	1697.0	1600	1800	1800	9.8
EI22B	0.94	42	39.3	1650.6	1700	1900	1900	9.8
EI25A	1.1	44.3	48.5	2145	1500	1800	1800	9.8
EI28A	0.55	89.5	49.3	4399	3600	3800	3800	22.0
EI28B	0.52	92.3	48.9	4515	4500	3800	3800	22.0
EI30	0.5	115.6	58.2	6731.1	4900	4000	3700	34.0
EI33	0.57	124.9	67.3	8408	3900	4200	4000	41.0
EI35A	0.6	107	68.1	731.1	4200	3500	3200	36.0
EI35B	0.5	126	68.1	8564	4400	3200	3200	43.0
EI40A	0.5	150	76.5	11534	5400	5100	4860	60.0
EI40B	0.5	153	76.3	11683	5400	5100	4860	60.0
EI50	0.4	231	94.1	21759	7000	6450	6100	115
EI60	0.4	272	11.8	30454.4	6400	6250	5600	139

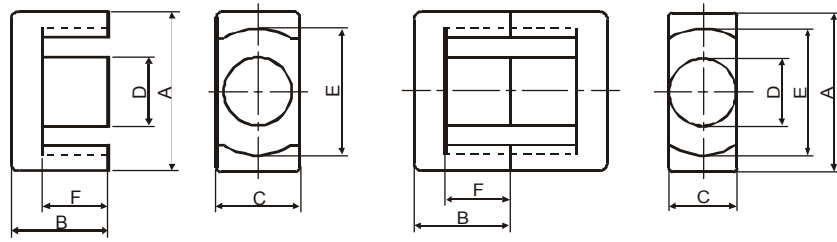


TYPE	Dimensions(mm)					
	A	B	C	D	E min	F
EE10	10.2 ± 0.3	5.5 ± 0.2	5.0 ⁺⁰ _{-0.3}	2.5 ± 0.2	7.5	4.3 ± 0.2
EE10A	10.2 ± 0.3	5.5 ± 0.2	9.8 ^{+0.3} _{-0.1}	2.4 ± 0.2	7.6min	4.3 ± 0.2
EE13	13.0 ± 0.4	6.0 ^{+0.2} _{-0.1}	5.9 ± 0.3	2.8 ⁺⁰ _{-0.4}	9.8	4.6 ^{+0.3} _{-0.1}
EE13A	13.0 ± 0.4	6.5 ± 0.2	9.8 ^{+0.3} _{-0.1}	3.6 ± 0.2	8.5min	4.6 ± 0.2
EE12.6	12.7 ± 0.4	6.4 ± 0.2	3.6 ± 0.2	3.7 ± 0.2	8.8	4.65 ± 0.3
EE16A	16.0 ± 0.4	7.3 ± 0.3	5.1 ⁺⁰ _{-0.4}	4.0 ± 0.2	11.7	5.2 ^{+0.3} ₋₀
EE16B	16.0 ± 0.4	12.4 ± 0.3	5.1 ⁺⁰ _{-0.4}	4.0 ± 0.2	11.9	10.4 ± 0.3
EF16	16.0 ^{+0.7} _{-0.5}	8.2 ⁺⁰ _{-0.3}	4.7 ⁺⁰ _{-0.4}	4.7 ⁺⁰ _{-0.3}	11.3	5.7 ^{+0.4} ₋₀
EE19A	19.0 ± 0.4	8.0 ± 0.3	5.0 ^{+0.1} _{-0.5}	5.0 ⁺⁰ _{-0.5}	13.8	5.6 ^{+0.4} _{-0.1}
EE19B	19.0 ± 0.4	13.6 ± 0.3	5.1 ⁺⁰ _{-0.5}	5.1 ⁺⁰ _{-0.5}	14.0	11.3 ± 0.3
EF20	20.0 ± 0.6	9.3 ⁺⁰ _{-0.4}	5.9 ⁺⁰ _{-0.5}	5.9 ⁺⁰ _{-0.4}	14.1	6.1 ^{+0.4} ₋₀
EE20	20.5 ± 0.5	10.7 ± 0.3	7.0 ± 0.3	5.0 ± 0.3	14.7	7.0 ± 0.3
EE20A	20.3 ± 0.5	8.4 ± 0.3	4.8 ± 0.2	4.8 ± 0.2	15.3min	6.2 ± 0.2
EE20/20	20.0 ± 0.4	10.15 ± 0.25	9.2 ± 0.25	4.5 ± 0.2	15.2min	7.9 ± 0.2
EE23	22.7 ± 0.3	11.0 ± 0.3	10.2 ± 0.2	7.5 ⁺⁰ _{-0.3}	16.4 ^{+0.5} ₋₀	7.5 ⁺⁰ _{-0.3}
EE25A	25.0 ± 0.5	9.9 ± 0.3	6.35 ± 0.25	6.35 ± 0.2	18.6	6.9 ± 0.3
EE25B	25.0 ± 0.5	9.8 ± 0.2	6.1 ± 0.3	5.8 ± 0.2	18.6	6.8 ± 0.2
EE25B /20	25.4 ± 0.6	9.8 ± 0.2	6.4 ± 0.3	6.35 ± 0.25	18.5	6.8 ± 0.3
EE25C	25.4 ± 0.6	9.6 ^{+0.3} _{-0.1}	6.75 ± 0.2	6.35 ± 0.25	18.6	6.5 ^{+0.3} _{-0.1}
EF25	25.05 ± 0.75	12.55 ± 0.25	7.2 ± 0.3	7.25 ± 0.25	17.5	8.95 ± 0.25

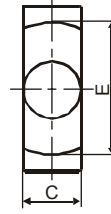
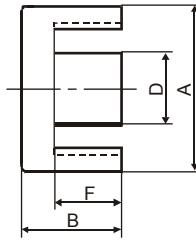
TYPE	C _i (mm ⁻¹)	A _e (mm ²)	L _e (mm)	V _e (mm ²)	AL(nH/N ²) ± 25%			Weight (g)
					TK	TP3	TP4	
EE10	2.1	12.7	26.1	330.7	700	810	810	1.8
EE10A	1.1	23.1	26.4	611.6	700	810	1000	1.5
EE13	1.7	17.2	30.0	513.8	860	1000	1000	3.6
EE13A	0.8	37.4	29.6	1107.6	860	1000	1500	3.5
EF12.6	2.4	12.4	29.7	369.0	650	900	800	2.0
EE16A	1.92	18.4	35.5	655	950	1100	1100	3.3
EE16B	2.8	19.6	55.2	1080	680	750	750	5.3
EF16	1.87	20.1	37.6	750	1000	800	800	4.0
EE19A	1.68	23.3	39.2	914	1050	1200	1200	4.6
EE19B	2.65	23.4	62.1	1450	1000	840	840	7.5
EF20	1.2	35.6	42.2	1505	1800	1550	1460	7.8
EE20	1.21	39	47.1	1840	2100	1900	1800	9.7
EE20A	1.9	22	42.8	942.8	1100	1900	1800	3
EE20/20	1.2	41.1	49.7	2042	2100	2000	1800	5
EE23	0.75	70.0	49.6	3469	/	2300	2300	17.5
EE25A	1.25	39.6	49.5	1963	1600	1900	1900	10.2
EE25B	1.3	36.9	49.7	1823	1400	1600	1600	9.0
EE25B/20	1.3	36.9	49.7	1823	1400	1600	1600	9.0
EE25C	1.15	43.4	48.2	2091	1600	1800	1800	10.0
EF25	1.340	33.5	44.9	1500	1630	1900	1900	14.8

TYPE	Dimensions(mm)					
	A	B	C	D	E min	F
EE25D	25.4 ± 0.5	9.8 ^{+0.3} _{-0.1}	6.4 ± 0.3	6.4 ± 0.3	18.6	6.8 ^{+0.3} _{-0.1}
EE25E	25.0 ± 0.5	12.5 ± 0.3	7.0 ± 0.4	6.8 ± 0.3	17.5	9.1 ± 0.2
EE26	26 ± 0.7	9.8 ± 0.3	9.8 ± 0.2	8.5 ± 0.2	18.2min	5.9 ± 0.2
EE28A	28.0 ± 0.5	16.5 ± 0.5	7.7 ⁺⁰ _{-0.5}	7.5 ⁺⁰ _{-0.5}	18.6	12.3 ± 0.3
EE28B	28.0 ± 0.6	10.5 ± 0.3	11.5 ± 0.25	7.7 ± 0.3	18.6	5.9 ± 0.3
EE28C	28.0 ± 0.6	16.8 ± 0.2	10.6 ± 0.3	7.2 ± 0.3	18.6	12.3 ± 0.3
EE28Q	28.2 ^{+0.35} _{-0.45}	13.75 ± 0.2	10.7 ± 0.2	7.9 ± 0.2	20.5 ± 0.3	9.9 ± 0.15
EE30	30.0 ± 0.5	13.1 ± 0.2	10.7 ± 0.3	10.7 ± 0.3	19.7min	8.1 ± 0.2
EE30/30	30.5 ± 0.5	14.95 ± 0.3	7.0 ± 0.3	6.9 ± 0.3	19.5	10.2min
EF32A	32.1 ± 0.8	12.9 ± 0.2	7.65 ± 0.35	9.2 ± 0.3	22.7 ^{+1.0} ₋₀	8.2 ± 0.3
EF32B	32.1 ± 0.8	16.1 ± 0.3	9.5 ⁺⁰ _{-0.7}	9.5 ⁺⁰ _{-0.6}	22.7 ^{+1.0} ₋₀	11.5 ± 0.3
EE33	33.0 ± 0.6	14.0 ± 0.3	13.0 ⁺⁰ _{-0.6}	9.7 ± 0.3	22.8	9.6 ± 0.3
EE35A	35.0 ± 0.6	14.6 ± 0.3	9.2 ± 0.25	9.4 ± 0.3	24.8	9.4 ^{+0.4} ₋₀
EE35B	34.54 ± 1.0	14.33 ± 0.35	9.53 ± 0.4	9.39 ± 0.3	25.4	9.7 ± 0.28
EE40A	40.0 ± 0.6	17.0 ± 0.3	10.7 ± 0.3	10.7 ± 0.3	27.6	10.25 ± 0.25
EE40B	40.0 ± 0.7	17.0 ± 0.3	12.0 ⁺⁰ _{-0.5}	12.0 ⁺⁰ _{-0.5}	26.8	10.4 ± 0.2
EE41	40.6 ± 0.6	16.5 ± 0.2	12.5 ± 0.25	12.5 ± 0.25	28.6	10.5 ± 0.3
EE42A	42.0 ^{+1.0} _{-0.7}	21.2 ± 0.4	12.0 ^{+0.2} _{-0.5}	12.0 ^{+0.2} _{-0.4}	29.5	15.0 ^{+0.3} _{-0.1}
EE42B	42.0 ^{+1.0} _{-0.7}	21.2 ± 0.4	15.0 ^{+0.2} _{-0.4}	12.0 ^{+0.2} _{-0.4}	29.5	15.0 ^{+0.3} _{-0.1}
EE42C	42.0 ^{+1.0} _{-0.7}	21.2 ± 0.4	20.0 ^{+0.2} _{-0.5}	12.0 ^{+0.2} _{-0.4}	29.5	15.0 ^{+0.3} _{-0.1}
EE46	46.4 ± 0.6	18.55 ± 0.25	9.4 ± 0.3	15.9 ± 0.3	31.6	11.4 ± 0.3
EE55	55.15 ± 1.05	27.5 ± 0.3	21.0 ⁺⁰ _{-0.8}	16.95 ± 0.25	38.1 ± 0.6	18.8 ± 0.3
EE65	65.2 ± 1.3	32.5 ± 0.3	27.4 ⁺⁰ _{-1.0}	19.65 ± 0.35	44.2	22.55 ± 0.35

TYPE	C ₁ (mm ⁻¹)	A _e (mm ²)	L _e (mm)	V _e (mm ²)	AL(nH/N ²) ± 25%			Weight (g)
					TK	TP3	TP4	
EE25D	1.20	40.7	49.2	2004	1600	1800	1800	11
EE25E	1.2	49.2	57.9	2850	1600	1850	1850	13.5
EE26	0.6	75.8	46	3488.1	1600	1850	1700	10
EE28A	0.95	71.6	63.0	4508	3400	3060	2850	35
EE28B	0.57	99.8	48.1	4801	4500	4000	4000	23.5
EE28C	0.82	87.4	73.1	6391	3200	2806	2650	33.5
EE28Q	0.8	83.1	64.4	6350.5	3200	2806	3500	26
EE30	0.5	108.6	57.7	6269.7	2200	1800	1900	20
EE30/30	1.1	59.4	65.5	3879	2200	1900	1900	22
EF32A	0.92	70.1	61.3	4295	/	2500	2500	21.5
EF32B	0.89	83	74	6140	/	2400	2400	30
EE33	0.57	124.0	66.1	8192	4500	4000	4000	40.6
EE35A	0.804	86.2	69.3	5973	2990	2600	2600	31
EE35B	0.83	88.3	69.4	6121	3680	3200	3000	31.5
EE40A	0.6	127	77.0	9922	4250	3700	3700	55
EE40B	0.50	153	76.5	11710	4600	4000	4000	60
EE41	0.50	152.0	77.1	11722	4704	4200	4200	61
EE42A	0.7	147.4	96.8	14275	4200	3700	3600	72
EE42B	0.50	184.3	96.8	17843	5400	4700	4700	90
EE42C	0.4	235	97.4	22889	6500	5700	5700	120
EE46	0.6	140.7	84.6	11883	/	3700	3700	62
EE55	0.35	354	123	43542	/	6700	6700	216
EE65	0.274	540	147	79000	/	8000	8000	410



TYPE	Dimensions(mm)					
	A	B	C	D	E min	F
EER1916	19.2 ± 0.4	16.0 ± 0.5		5.3 ± 0.2	14.0 ± 0.4	11.3 ± 0.3
EER25	25.3 ± 0.6	9.3 ± 0.3	7.5 ± 0.3	7.5 ± 0.3	19.8	6.2 ± 0.3
EER28A	28.5 ± 0.6	14.0 ± 0.3	11.4 ± 0.3	9.9 ± 0.3	21.2	9.6 ± 0.3
EER28B	28.5 ± 0.6	16.9 ± 0.3	11.4 ± 0.3	9.9 ± 0.3	21.2	12.5 ± 0.3
ETD29	29.8 ± 0.8	15.8 ± 0.2	9.5 ± 0.3	9.5 ± 0.3	22.0	11.0 ± 0.3
EER30	30.0 ± 0.8	17.5 ± 0.3	11.2 ± 0.3	9.9 ± 0.3	22.5	12.6 ± 0.3
EER3016	30.0 ± 0.5	8.0 ± 0.25	20.0 ± 0.3	11 ± 0.2	26.0 ± 0.4	5.3 ± 0.2
ETD34	34.2 ± 0.8	17.3 ± 0.2	10.8 ± 0.3	10.8 ± 0.3	25.6	12.1 ± 0.3
EER35	35.0 ± 0.8	21.1 ± 0.3	11.3 ± 0.3	11.3 ± 0.3	26.5min	15.5 ± 0.3
EER35A	35.0 ± 0.7	21.0 ± 0.3	11.3 ± 0.4	11.3 ± 0.3	25.3	15.0 ± 0.3
EER35B	35.0 ± 0.7	16.8 ± 0.3	11.3 ± 0.4	11.3 ± 0.3	25.3	10.8 ± 0.3
EER35C	36.0 ± 0.7	21.6 ± 0.4	11.3 ± 0.4	11.3 ± 0.4	26.5	15.6 ± 0.4
EER37	37.0 ± 0.6	20.7 ± 0.3	11.3 ± 0.3	11.3 ± 0.3	27.6	14.7 ± 0.3
ETD39	39.1 ± 0.9	19.8 ± 0.2	12.6 ± 0.4	12.5 ± 0.3	29.3	14.6 ± 0.4
EER40A	40.0 ± 0.8	22.4 ± 0.3	13.3 ± 0.3	13.3 ± 0.3	29.0	15.4 ± 0.3
EER40B	41.0 ± 0.8	22.4 ± 0.3	13.3 ± 0.3	13.3 ± 0.3	29.3	15.4 ± 0.3
EER40C	40.0 ± 0.7	22.9 ± 0.3	13.3 ± 0.3	13.3 ± 0.3	29.5	15.9 ± 0.3



TYPE	C ₁ (mm ⁻¹)	A _e (mm ²)	L _e (mm)	V _e (mm ²)	AL(nH/N ²) ± 25%			Weight (g)
					TK	TP3	TP4	
EER1916	2.2	27.4	60.2	1650.7				
EER25	1.09	44.3	48.3	2140	2100	2050	1920	12
EER28A	0.79	82.1	64	5254	3120	3080	2870	28
EER25B	0.86	85.6	73.2	6266	2100	2660	2520	33
ETD29	0.95	73.6	70.6	5196	2500	2100	2200	28
EER3016	0.4	107.5	45	4833.8			5700	14
EER30	0.99	85.5	75.4	6673	2800	2600	2500	32
ETD34	0.81	97.1	78.6	7632	2600	2450	2400	40
EER35	0.9	103.1	92.6	9551.9		2400		25
EER35A	0.84	107	90.8	9716	2960	2580	2600	53
EER35/34B	0.68	107	72.8	7790	3100	2770	2770	51
EER35C	0.84	107	90	9630	3100	2700	2700	55
EER37	0.8	112.1	90.5	10149	2960	2580	2600	52.5
ETD39	0.737	125	92.1	1151	3240	2800	2700	60
EER40A	0.66	149	98	14602	/	3500	3500	78
EER40B	0.68	149	102	15198	/	3500	3500	78
EER40C	0.67	149	100	14900	/	3400	3400	78

TYPE	Dimensions(mm)					
	A	B	C	D	E min	F
EER40D	40.2 ± 0.5	21.4 ± 0.3	15.5 ± 0.3	15.5 ± 0.3	29.4	15.4 ± 0.3
EER40E	40.0 ^{+1.0} _{-0.5}	23.0 ± 0.3	13.3 ± 0.3	13.3 ± 0.3	29.0	16.0 ± 0.3
EER40F	41.0max	22.8 ± 0.3	13.3 ± 0.4	13.3 ± 0.3	29.5	15.8 ± 0.3
EER40G	40.8 ^{+0.8} _{-0.5}	21.3 ± 0.2	15.0 ± 0.2	14.0 ± 0.25	30.7	15.3 ± 0.2
EER40H	41.0 ± 0.7	24.0 ^{+0.3} ₋₀	13.0 ⁺⁰ _{-0.3}	13.0 ⁺⁰ _{-0.3}	30.0	17.0 ^{+0.3} ₋₀
EER42-1	42.0 ± 0.6	21.6 ± 0.3	14.7 ± 0.3	14.7 ± 0.3	31.0 ± 0.5	15.9 ± 0.3
EC42	42 ± 0.8	22.4 ± 0.3	15.5 ± 0.25	15.5 ± 0.25	29.4min	15.4 ± 0.3
EER42A	40.2 ± 0.8	22.0 ± 0.3	15.2 ^{+0.3} _{-0.2}	15.2 ^{+0.3} _{-0.2}	30.5	15.4 ± 0.3
EER42B	42.0 ± 0.8	21.2 ± 0.3	15.2 ^{+0.3} _{-0.2}	15.2 ^{+0.3} _{-0.2}	30.5	15.4 ± 0.3
EER43A	43.0 ± 0.8	22.7 ^{+0.25} _{-0.2}	15.5 ± 0.4	15.5 ± 0.3	30.7	15.7 ± 0.3
EER43B	43.0 ± 0.8	22.4 ± 0.3	15.5 ± 0.4	15.5 ± 0.3	31.0	15.4 ± 0.3
ETD44	44.0 ± 1.0	22.3 ± 0.2	14.8 ± 0.4	14.8 ± 0.4	33.3 ± 0.8	16.5 ± 0.4
EER45	45.0 ± 0.8	24.0 ± 0.3	14.8 ± 0.4	14.8 ± 0.3	32.0	17.6 ± 0.3
EER49A	49.0 ± 0.8	26.2 ± 0.4	17.0 ± 0.5	17.0 ± 0.5	36.5	18.7 ^{+0.3} _{-0.2}
EER49B	49.0 ± 0.8	27.0 ± 0.3	17.2 ± 0.4	17.2 ± 0.3	36.5	18.7 ± 0.3
ETD49	49.0 ± 1.0	24.7 ± 0.3	16.3 ± 0.4	16.3 ± 0.4	36.1	18.1 ± 0.4
EC49C	49 ± 0.8	21.2 ^{+0.5} _{-0.1}	17.2 ^{+0.2} _{-0.4}	17.2 ^{+0.2} _{-0.4}	36.6min	14.6 ^{+0.4} ₋₀
EER50	50.5 ± 0.8	27.0 ± 0.3	18.7 ± 0.4	18.7 ± 0.3	38.0	18.7 ± 0.3
EER53	53.2 ± 0.8	23.2 ± 0.3	21.5 ± 0.3	20.0 ^{+0.2} _{-0.3}	38.7	16.3 ± 0.3
EER54	54.2 ± 0.8	25.1 ± 0.4	18.9 ± 0.4	18.9 ± 0.3	40.5	17.5 ± 0.3
EER55A	56.0 ± 0.8	30.7 ± 0.3	20.4 ± 0.3	20.4 ± 0.3	44.0	22.9 ± 0.3
EER55B	56.9 ± 1.0	29.0 ± 0.4	24.3 ± 0.5	20.2 ± 0.3	43.5	20.4 ± 0.3

TYPE	C ₁ (mm ⁻¹)	Ae (mm ²)	Le (mm)	Ve (mm ³)	AL(nH/N ²) ± 30%			Weight (g)
					TP2	TP3	TP4	
EER40D	0.50	187.7	93.9	17415	3830	3800	3300	78
EER40E	0.65	151	98.2	14828	/	3300	3300	77
EER40F	0.65	151	98.1	15215	/	3300	3300	78
EER40G	0.609	158	96.3	15230	/	3600	3600	80
EER40H	0.7	145	102.8	14906	/	3200	3200	80
EER42-1	0.6	171.7	97.5	16740.8	/	3700		44
EER42	0.5	199.9	96.3	19251.5	/		4200	50
EER42A	0.547	183	96.3	17623	/	4500	4500	94
EER42B	0.528	183.7	96.9	17800	/	4400	4400	92
EER42/C	0.5	155.3	97.5	15137	/	3500	3400	96
EER43A	0.5	194	98.0	19821	/	4500	4500	105
EER43B	0.5	194	96.8	19584	/	4500	4500	102
ETD44	0.59	173.0	103.0	17720	/	4110	4000	94
EER45	0.6	189.5	105.0	19894	/	5000	4670	108
EER49A	0.5	235.8	116.0	27357	/	6800	6250	112
EER49B	0.5	241	118	28460	3500	6500	6030	148
ETD49	0.543	217.6	112.2	24417	3700	3700	4400	124
EC49C	0.4	226.5	98.9	22407.2	/	4400	/	58
EER50	0.437	277.5	117.6	32637	/	5730	5300	170
EER53	0.338	319.5	105.9	33828	/	6200	6200	170
EER54	1.0	594.1	48.7	28958.2	/	4800	4800	181
EER55A	0.62	303.1	188.2	41896.1	/	7100		220
EER55B	0.36	353.8	128.7	45533	/			228